

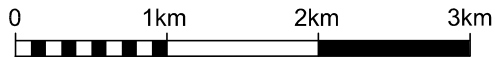


The Long March Rogaine

WARA 6 Hour Rogaine. 18th March 2000

LEGEND

SCALE 1:50,000, 5 metre contour interval



Building	■
Control	○ 39
Contours	
Dams	■
Forest Boundary	—/—/—/—
Hash House	△
Magnetic North Line	↑
Out of Bounds	
Road - Bitumen	—
Road - Major Gravel	- - -
Road - Minor, or Farm Track	- · - · -
Watercourse	
Water Drop	○ W

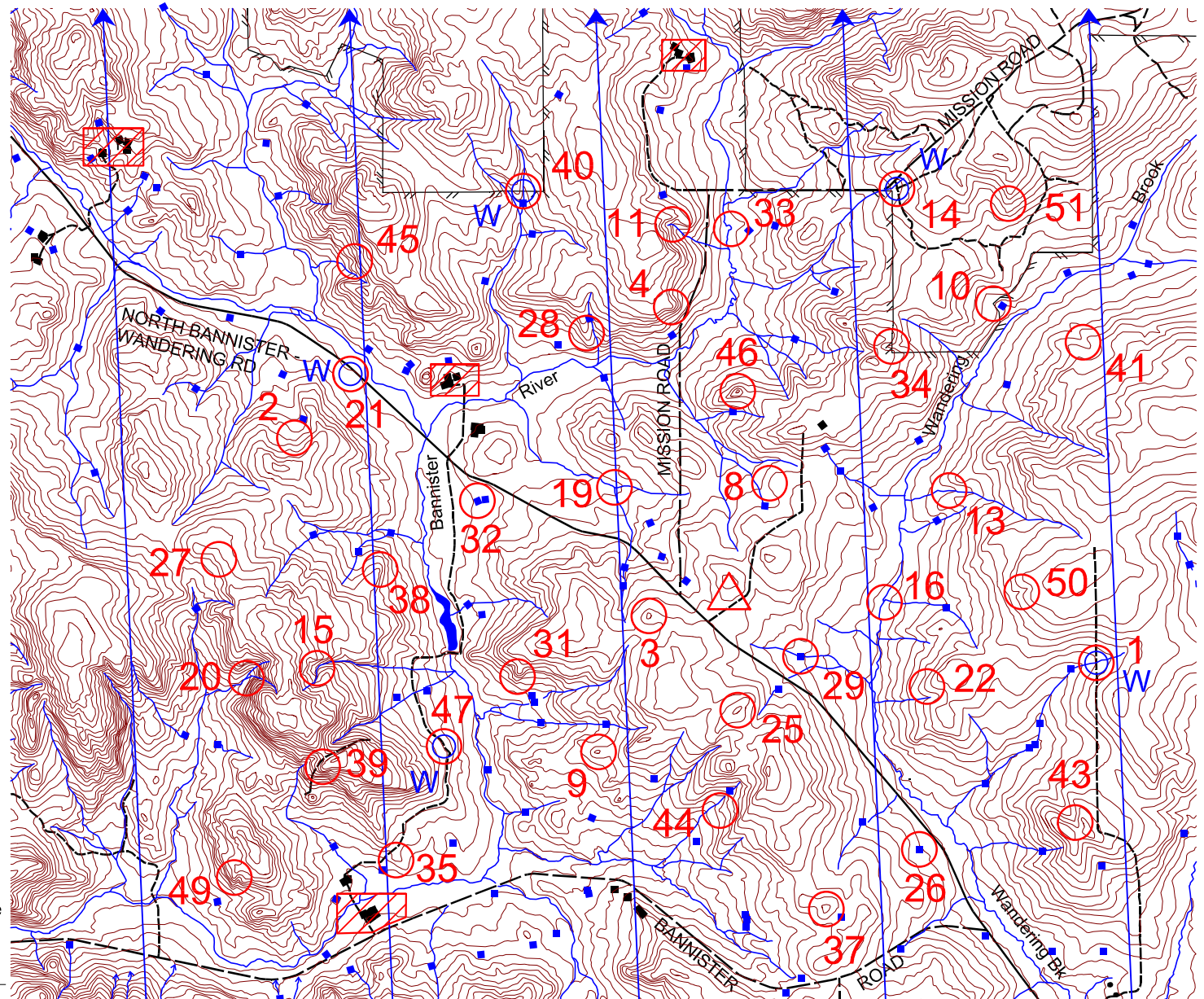
SETTERS AND VETTERS

Brian Austin	Toivo Pedaste
Gary Carroll	David Currell

SPECIAL THANKS TO THE FARMERS

Bob and Inez Treasure
Steve and Marie Watts
Max and Virginia Watts
Jody Krakouer of the Southern Aboriginal Land Corporation

This map was produced using OCAD. Data supplied by DOLA and used under copy licence 393/93. Possession of this map does not give right of entry to this area.



The Long March 6 Hour Rogaine. 18th March 2000

No.	Description	Points	No.	Description	Points	Important Information
1	The track and watercourse crossing, 100m at 10 degrees. East side of a laneway.	20	43	A watercourse, head of	90	Control Cards From 1430 Saturday
2	The broad gully, north side of 100m x 40m boulder field	20	44	A knoll, low	90	
3	The knoll	20	45	The gully, head of	90	Briefing 1445 Saturday
4	The spur	20	46	The knoll	90	
			47	The track and a minor watercourse junction. 25m @ 200 degrees	90	Start 1500 Saturday
8	The spur, broad	30	49	The spur	100	
9	The knoll, east side of a huge boulder	30	50	The gully	100	Finish 2100 Saturday
10	A fence corner	30	51	The spur, on a minor track	100	
11	The watercourse bend, north side of boulder field	30				Hash House Closed!
13	The watercourse	40				
14	A crucifix, 15m at 180 degrees	40				Sunset 1827 Saturday
15	A watercourse junction	40				
16	A watercourse bend, west side of plantation (rehabilitation area)	40				Moonrise 1733 Saturday Moon 96%
19	A watercourse junction, south side, west side of swamp	50				
20	The watercourse junction. DANGER. Steep rock surface to the south east. Approach with caution	50				Late Penalty 10 points per minute or part minute
21	A water tank. Smelly! Water drop is under tree to the west	50				
22	The spur, rocky	50				Controls Used 39
25	The knoll, broad	60				
26	The dam, north east side on a tree	60				Total Points 2360
27	The spur, top of a breakaway (crumbling laterite cliff)	60				
28	The spur	60				
29	The dam, north east corner	60				
31	The spur, in a boulder field	70				
32	The western dam, western side	70				
33	The watercourse bend	70				
34	The gully, a fence crossing	70				
35	A knoll, boulder-ish	70				
37	The knoll	80	Water	Control #1. Water is 100m northwards from the track and watercourse intersection. On the east side of the laneway in the shade		
38	The spur	80	Water	Control #14. Holy water! Blessed are the rogainers		
39	The spur	80	Water	Control #21. Water is under a tree to the west of a water tank		
40	The watercourse, a fence crossing	80	Water	Control #40. Water is on the farm and forest boundary		
41	The gully	80	Water	Control #47. Water is under trees on the west side of farm track		

The following roads will be regularly patrolled: Bannister Road; North Bannister-Wandering Road; Mission Road; Farm track leading to Control #1; Farm track leading from 32 to 35.