



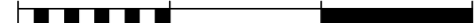
# Hillman Hunter Safari

WARA Autumn 12 Hour  
1st May 1999

## LEGEND

SCALE 1:50,000, 5 metre contour interval

0 1km 2km 3km



- Building
- Control  70
- Contours
- Dams
- Hash House
- Magnetic North Line
- Out of Bounds
- Pipeline
- Railway, Abandoned
- Road, Bitumen
- Road, Major Gravel
- Road, Minor Gravel
- Watercourse
- Water Drop  W

## SETTERS AND VETTERS

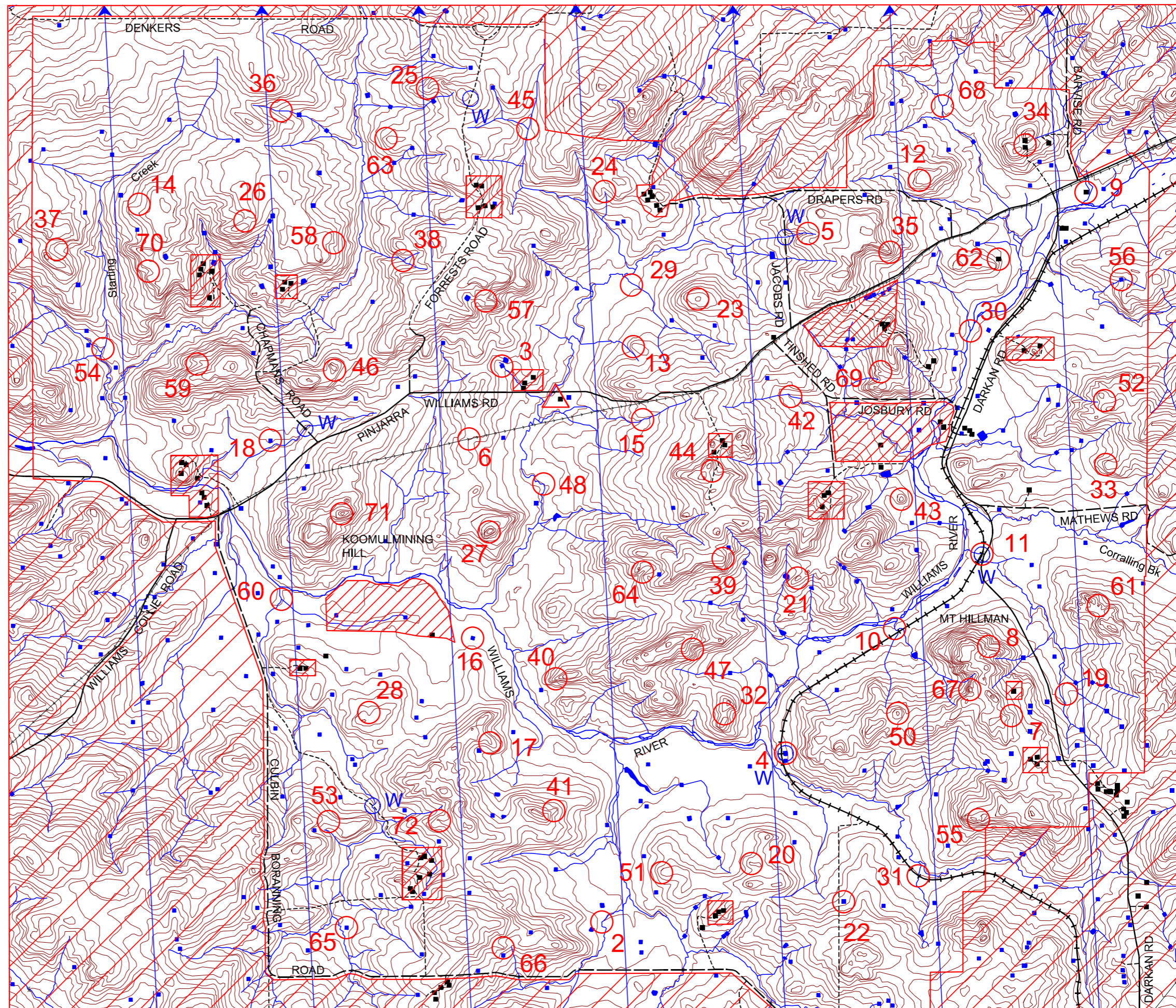
Steve Sutherland    Russell Harvie  
Gary Carroll        Di Challen

## SPECIAL THANKS TO THE FARMERS

A & J Chitty  
W & R Cresswell  
P & G Earnshaw  
A Higham  
H Higham  
G & S Ford  
D & J Lavender  
G & G Klug  
H & S Klug  
W & K Newton-Wordworth  
H & S Panizza  
V & N Pascoe  
P & S Paterson  
W & E Petchell  
G Prowse  
R Tucker  
L Wilson  
D Wright

Possession of this map does not give right of entry to this area.

This map was produced using OCAD. Data supplied by DOLA and used under copy licence 393/93. Thanks to David Chiang of DOLA.





# HILLMAN HUNTER SAFARI, 12 Hour Rogaine. 1st May 1999

| No. | Description                                   | Points | No.   | Description                                                                                          | Points | Important information |
|-----|-----------------------------------------------|--------|-------|------------------------------------------------------------------------------------------------------|--------|-----------------------|
| 2   | The watercourse, bend                         | 20     | 43    | The knoll                                                                                            | 60     | <b>Control Cards</b>  |
| 3   | The south western dam, north side             | 20     | 44    | A watercourse                                                                                        | 60     |                       |
| 4   | The northern dam, south west side             | 20     | 45    | The watercourse junction                                                                             | 60     | From 0930 Sat.        |
| 5   | The gully                                     | 20     | 46    | The knoll, south side                                                                                | 60     | <b>Briefing</b>       |
| 6   | A pipe and fence intersection                 | 20     | 47    | The gully                                                                                            | 60     |                       |
|     |                                               |        | 48    | The watercourse bend                                                                                 | 60     | 0945 Sat.             |
| 7   | The spur                                      | 30     |       |                                                                                                      |        |                       |
| 8   | The gully                                     | 30     | 50    | The knoll                                                                                            | 70     | <b>Start</b>          |
| 9   | The ruin, in a chimney                        | 30     | 51    | The spur                                                                                             | 70     |                       |
| 10  | The watercourse bend                          | 30     | 52    | The saddle                                                                                           | 70     | 1000 Sat.             |
| 11  | A railway bridge                              | 30     | 53    | A saddle, broad                                                                                      | 70     | <b>Finish</b>         |
| 12  | A knoll, rocky                                | 30     | 54    | The eastern watercourse, bottom of waterfall                                                         | 70     |                       |
| 13  | The knoll, north west side                    | 30     |       |                                                                                                      |        | 2200 Sat.             |
| 14  | The gully                                     | 30     | 55    | The gully, upper part                                                                                | 80     | <b>Hash House</b>     |
| 15  | A watercourse junction                        | 30     | 56    | The Dam, west side                                                                                   | 80     |                       |
| 16  | The dam, south east side                      | 30     | 57    | A saddle                                                                                             | 80     | Opens 1600 Sat.       |
| 17  | The spur                                      | 30     | 58    | The spur                                                                                             | 80     | Closed About Midnight |
| 18  | The dam, west side                            | 30     | 59    | The gully                                                                                            | 80     | Re-opens 0700 Sun.    |
|     |                                               |        | 60    | The watercourse junction (look for Moses)                                                            | 80     |                       |
| 19  | A 6m high boulder, east side, on a broad spur | 40     |       |                                                                                                      |        | <b>Fruit Drops</b>    |
| 20  | The knoll, west side                          | 40     | 61    | The knoll, rocky                                                                                     | 90     |                       |
| 21  | The knoll, rocky                              | 40     | 62    | The ruin, in the dining room (Military Barracks, built 1836)                                         | 90     | At Water Drops        |
| 22  | The dam, 50m south on a windmill              | 40     | 63    | The spur                                                                                             | 90     | from 4pm              |
| 23  | The knoll, 30m @ 250 degrees                  | 40     | 64    | The gully                                                                                            | 90     | <b>Sunset</b>         |
| 24  | The gully, head of                            | 40     | 65    | The dam, 30m north. On Mr Squiggle's rocket                                                          | 90     |                       |
| 25  | A knoll                                       | 40     | 66    | The spur                                                                                             | 90     | 17:34 Sat.            |
| 26  | The saddle                                    | 40     |       |                                                                                                      |        |                       |
| 27  | The knoll                                     | 40     | 67    | The knoll, between two enormous boulders.<br>DANGER. Extremely high cliffs. Approach from east side. | 100    | <b>Moonrise</b>       |
| 28  | The gully, incredibly shallow                 | 40     | 68    | The watercourse junction                                                                             | 100    |                       |
| 29  | A water trough, 20m SW of the watercourse     | 40     | 69    | The gully                                                                                            | 100    | 18:17 Sat.            |
| 30  | The watercourse and river intersection        | 40     | 70    | The gully                                                                                            | 100    |                       |
|     |                                               |        | 71    | The summit                                                                                           | 100    |                       |
| 31  | The railway and watercourse intersection      | 50     | 72    | The spur                                                                                             | 100    |                       |
| 32  | The saddle, northern side                     | 50     |       |                                                                                                      |        |                       |
| 33  | The spur, top of                              | 50     |       |                                                                                                      |        |                       |
| 34  | A Hills Hoist                                 | 50     |       |                                                                                                      |        |                       |
| 35  | The spur, top of                              | 50     |       |                                                                                                      |        |                       |
| 36  | The watercourse                               | 50     |       |                                                                                                      |        | <b>Controls Used</b>  |
| 37  | The gully, upper part                         | 50     |       |                                                                                                      |        | 70                    |
| 38  | The watercourse junction                      | 50     | Water | At Control 4                                                                                         |        | <b>Total Points</b>   |
| 39  | The spur, top of                              | 50     | Water | At Control 11                                                                                        |        |                       |
| 40  | The spur, rocky                               | 50     | Water | At watercourse and Jacobs Rd intersection. West of Control 5                                         |        |                       |
| 41  | A knoll                                       | 50     | Water | At watercourse and Chapmans Rd intersection. East of Control 18                                      |        |                       |
| 42  | A watercourse junction                        | 50     | Water | On crest on Forrests Rd. Between controls 25 and 45                                                  |        |                       |
|     |                                               |        | Water | At track and watercourse intersection. East of Control 53                                            |        | 3870                  |