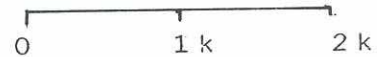


# TALBOT'S LAST STAND



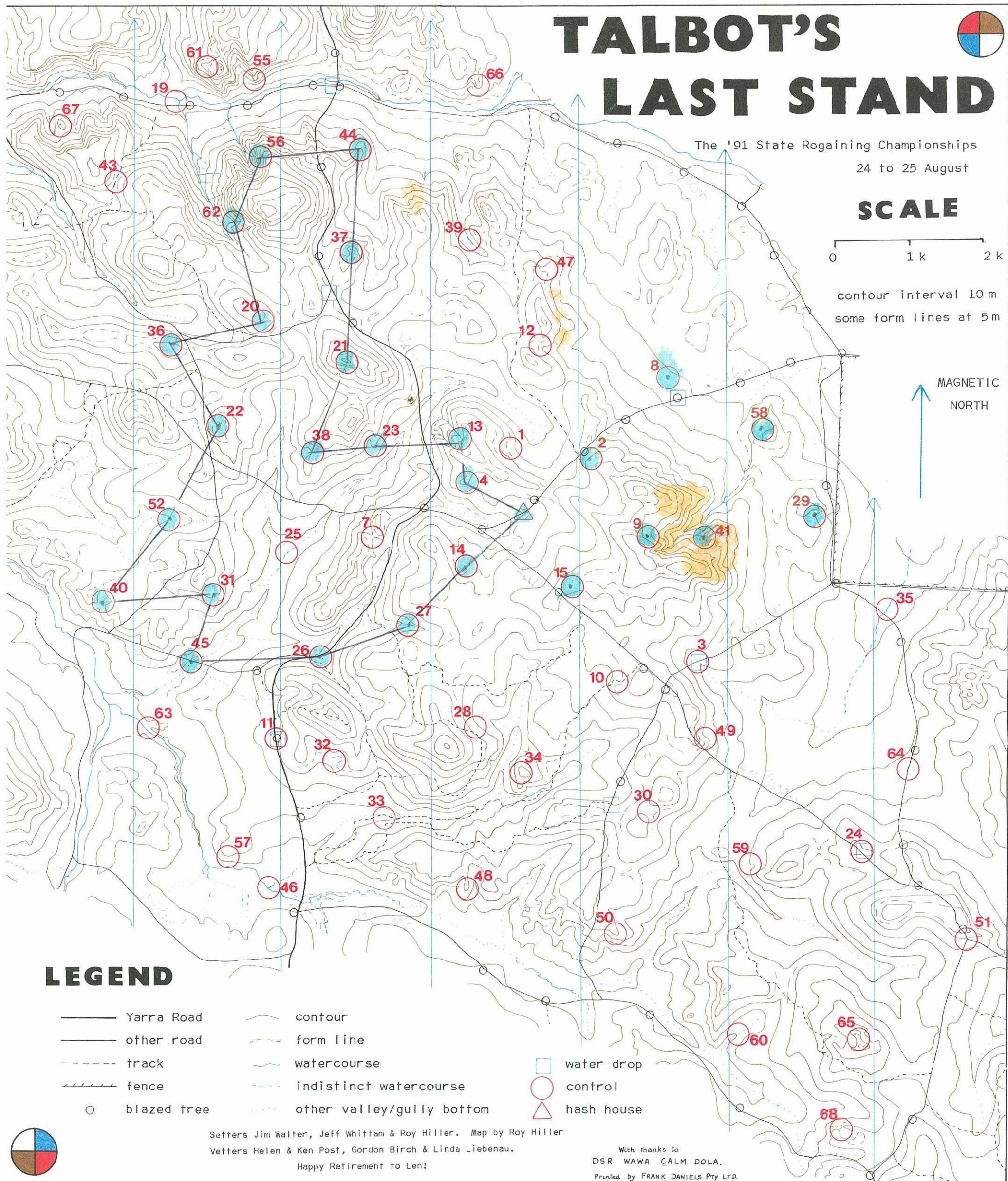
The '91 State Rogaining Championships  
24 to 25 August

## SCALE



contour interval 10 m  
some form lines at 5 m

MAGNETIC  
NORTH



## LEGEND

- |               |                                 |              |
|---------------|---------------------------------|--------------|
| — Yarra Road  | — contour                       | □ water drop |
| — other road  | - - - form line                 | ○ control    |
| - - - track   | — watercourse                   | △ hash house |
| /// fence     | - - - indistinct watercourse    |              |
| ○ blazed tree | - - - other valley/gully bottom |              |

Setters Jim Walter, Jeff Whittam & Roy Hiller. Map by Roy Hiller  
Vettors Helen & Ken Post, Gordon Birch & Linda Liebenau.  
Happy Retirement to Len!

With thanks to  
DSR WAWA CALM DOLA.  
Printed by FRANK DANIELS Pty LTD





me  
6446  
1727

1	the very shallow gully #			
2	a gravel heap, SE side #		40	20 pts
3	the road/gully crossing *			
4	a summit #			
7	the saddle *	970		
8	a lost banner *	1500		
9	a rock surface (SW ern), SW side *	<u>2470</u>		
10	a detour in the track, then 100m at 210°		180	30 pts
11	the blazed tree, then 300m at 235°			
12	the saddle			
13	the head of the watercourse *			
14	on an indistinct track #			
15	a loo (out of order) #			
19	the watercourse bend, S side			
20	a black stump (eastern, 2m high)			
21	a 2.5m boulder cluster, S side			
22	the summit	20		
23	a knoll on the spur	16		
24	a 2m boulder cluster		360	40 pts
25	the watercourse junction (indistinct)			
26	the road/watercourse crossing, then 100m at 335°			
27	the distinct watercourse (lower part)			
28	a bend in a track			
29	upper part of a gully			
30	the broad gully, on an indistinct track			
31	head of the gully			
32	in the gully [sorry about the blue form line]			
33	inside the curve in the N track			
34	the summit			
35	S edge of a thicket	20		
36	a boulder (eastern, 1.2m, E side)	20	400	50 pts
37	a 4m/2m boulder, SW side			
38	head of the gully			
39	the distinct watercourse, middle part			
40	an indistinct track/gully crossing			
41	head of a watercourse			
43	the saddle			
44	on the spur (narrow part)			
45	the road/watercourse crossing, then 150m S			
46	the watercourse junction			
47	between 2 rock surfaces (60mX25m & 20mX20m)	36	540	60 pts
48	a summit	18		
49	a 1.5m boulder			
50	2m boulders on S side of the spur top			
51	the road junction, then 100m at 40°			
52	a big dead tree standing on the S side of the broad gully bottom			
55	on the spur (top of a steep rocky section)			
56	head of the watercourse (there are short unmapped headstreams to S)			
57	on the spur			
58	4m boulders, E side	35	350	70 pts
59	on the small spur			
60	in the gully			
61	a 2m boulder, E side	2330		
62	foot of a 3m cliff by the watercourse	60		
63	a pool (about 20mX30m)	<u>2390</u>		
64	an apiary marker, then 150m at 100°		400	80 pts
65	the saddle			
66	on the spur (top of rocky section)			
67	the summit		200	100 pts
68	in the gully			

← not punched

# controls with extra board and punch \*controls with extra board only

2470 Real score