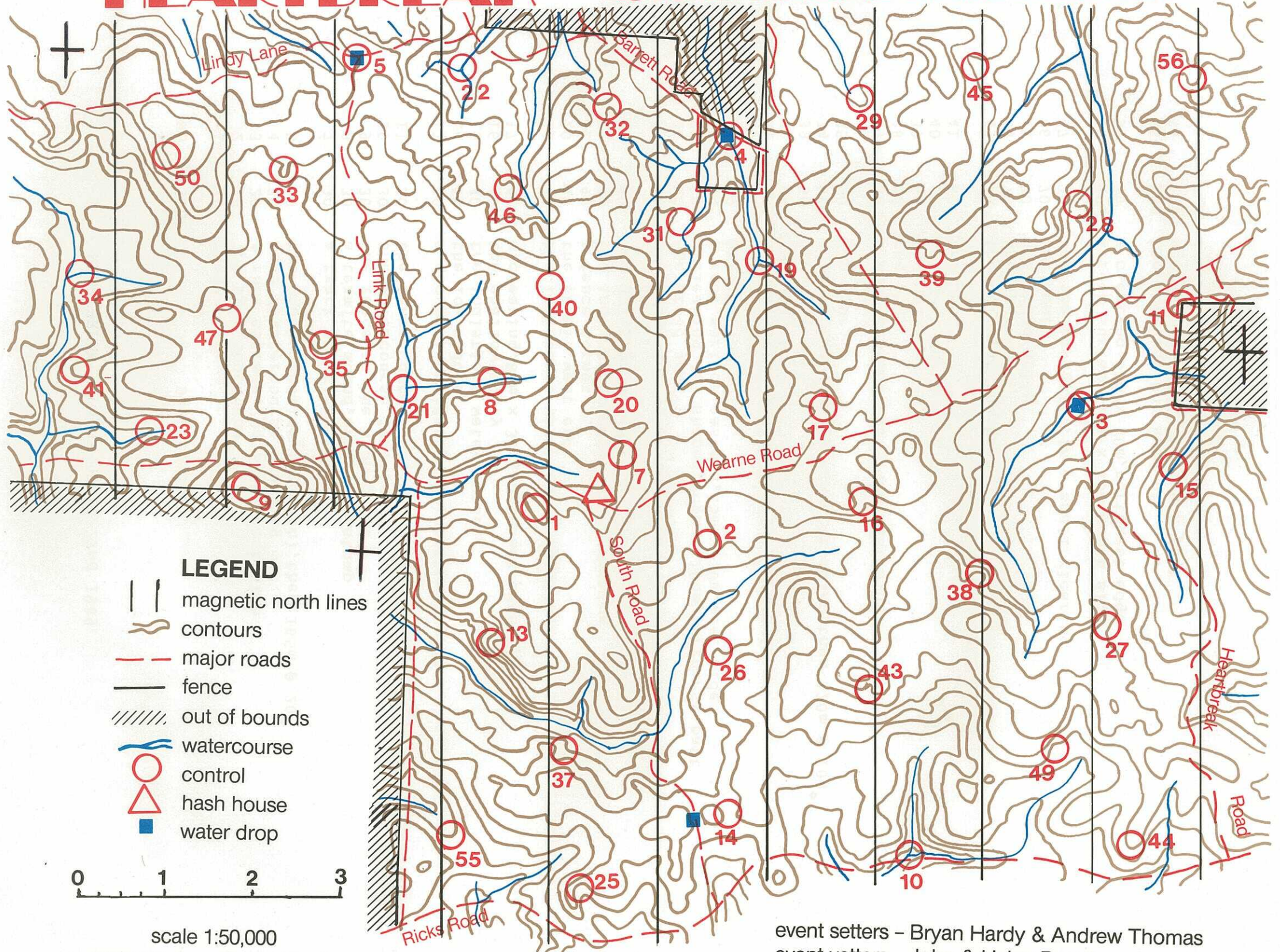


HEARTBREAK

AUTUMN ROGAINE APRIL 22nd 1989



LEGEND

- magnetic north lines
- contours
- major roads
- fence
- out of bounds
- watercourse
- control
- hash house
- water drop

0 1 2 3

scale 1:50,000
cartography - Bryan Hardy

event setters - Bryan Hardy & Andrew Thomas
event veters - John & Helen Breed

HEARTBREAK ROGAINE APRIL 22nd 1989

| No | Value | Description |
|----|-------|--|
| 1 | 20 | the summit |
| 2 | 20 | the spur, south end |
| 3 | 20 | a rock surface, 20m x 20m, east side |
| 4 | 20 | road / watercourse crossing |
| 5 | 20 | the track junction, (western), then 165m @ 20° |
| 7 | 30 | a track junction |
| 8 | 30 | a termite mound, on a tree stump |
| 9 | 30 | the fence, at the high point |
| 10 | 30 | the watercourse junction |
| 11 | 30 | the fence corner, then 90m @ 245° |
| 13 | 40 | a group of boulders, 2.5m, northwest side |
| 14 | 40 | the low saddle |
| 15 | 40 | the indistinct watercourse |
| 16 | 40 | the shallow gully |
| 17 | 40 | a clearing, 80m x 30m, northeast edge |
| 19 | 40 | the indistinct watercourse junction |
| 20 | 40 | the summit, west end |
| 21 | 40 | a fence corner |
| 22 | 40 | the indistinct watercourse junction |
| 23 | 40 | the gully, on a track |
| 25 | 50 | the broad gully, at the head of |
| 26 | 50 | the broad spur |
| 27 | 50 | a clearing, 'L' shaped, 200m x 100m, northwest part |
| 28 | 50 | a rock surface, eastern, 15m x 30m, west side |
| 29 | 50 | the shallow gully |
| 31 | 50 | a rock surface, 20m x 20m, in the middle |
| 32 | 50 | the saddle |
| 33 | 50 | the spur |
| 34 | 50 | a (sometimes) boggy track crossing, then 120m @ 104° |
| 35 | 50 | the spur |
| 37 | 60 | a rock surface, 20m x 40m, east side |
| 38 | 60 | the spur |
| 39 | 60 | the gully |
| 40 | 60 | a track junction |
| 41 | 60 | the spur |
| 43 | 70 | the gully, at the head |
| 44 | 70 | the spur |
| 45 | 70 | the broad gully |
| 46 | 70 | the spur |
| 47 | 70 | the shallow gully, in a small clearing |
| 49 | 90 | a rock surface, 20m x 15m, south side |
| 50 | 90 | a clearing, 30m x 30m, northwest edge |
| 55 | 100 | the gully, at the head of |
| 56 | 100 | a clearing, 30m x 30m, south part |